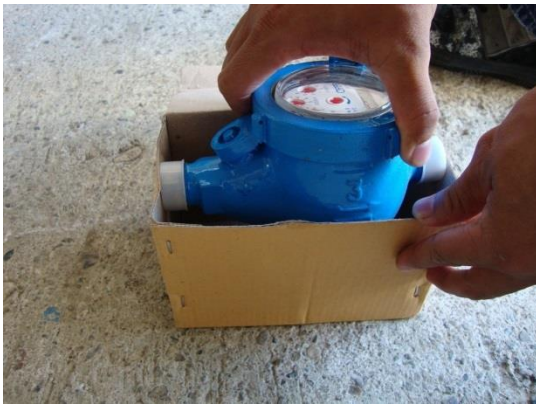


INFOGRAPHIC ON PROPER HANDLING AND TRANSPORTATION OF WATER METER FOR EXTERNAL CUSTOMERS:

1. Meter must be clean.
2. Place plastic cup/cover to both ends (INLET AND OUTLET PORTION).



3. Put the water meter in a small box.



4. Avoid dropping or inflict strong shaking and or vibrating during transportation.